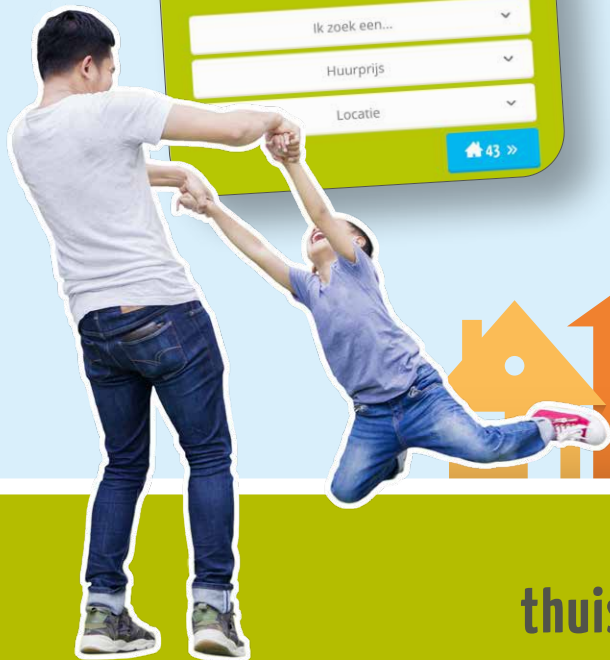


One address for all homes

Together they rent out over 100,000 homes



thuis in limburg.nl



Thuis in Limburg

The largest selection of rental homes in Limburg can be found at www.thuisinlimburg.nl. Many housing associations in Limburg also use this site to rent out their homes, parking spaces and garages. Together they rent out over 100,000 homes. These housing associations also offer owner-occupied homes via this website.

Follow us on



Good luck with finding your new home!

If you have any questions, comments and/or tips for Thuis in Limburg, please visit www.thuisinlimburg.nl or contact us via info@thuisinlimburg.nl.

Looking for a place to live?

If you are looking for a place to live, you can register on our website. This is possible from the age of 18. The website also allows you to respond to listings. If you do not own a computer with internet access, then please contact one of the participating housing associations.

Step 1 Details applicant 1

Fill in: your personal details.

Step 2 Details applicant 2

Are you planning on living together or are you jointly looking for a new place to live? **Fill in:** your partner's personal details.

Step 3 People moving with you

Are other people also moving home with you? **Fill in:** the personal details of the people moving home with you (child/children or other adults).

Step 4 Profile

Fill in whether you live in a rental home or an owner-occupied home.

Step 5 Account

Choose your username and password, and agree to the terms and conditions.



'Passend aanbod'

Here you can find the rental homes that fit your search profile and income. If you are interested in a particular home, then please read the terms and conditions carefully before responding. Click the blue button in the listing to qualify for that home. You can respond to a maximum of five listings.

'Mijn reacties'

This page shows all homes that you responded to and the position in which you ended. Your responses are split into three tabs:

- Responses (still online)
- Pending and
- Previous responses.

'Aangeboden woning'

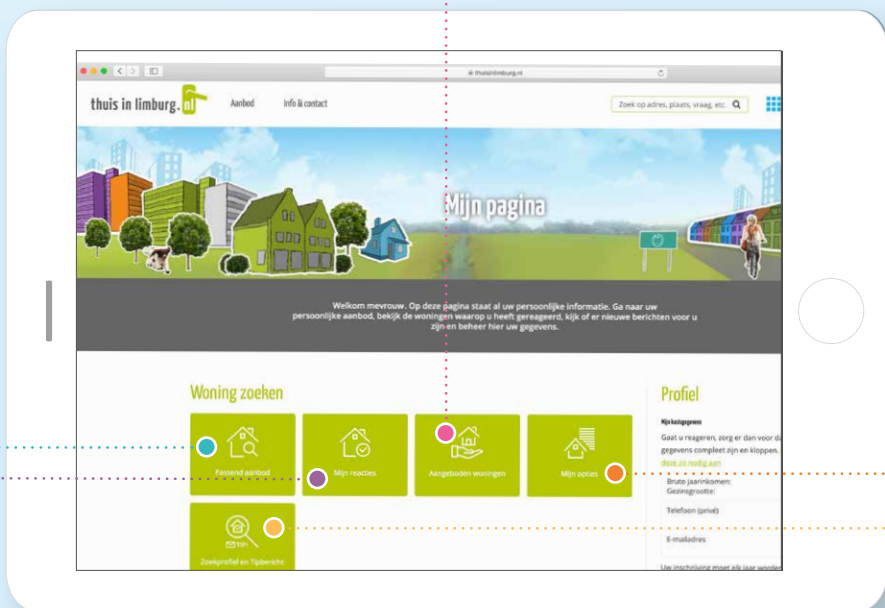
If you receive an invitation or offer, you will see it on this page.

'Mijn opties'

This section shows an overview of options you have taken on homes that are available for long-term rental.

'Zoekprofiel en tipbericht'

Enter your living preferences, like location, type of home and number of bedrooms. Also specify whether you would like to receive notifications (e-mail) if a home that meets your requirements is placed online.





'Gebruikersnaam en wachtwoord'

Here you can change your username and/or password.

'Persoonlijke Informatie'

Has something changed in your household or income? Has, for example, someone moved out or are you going through a divorce? Then please change your details to qualify for appropriate homes.

'Mijn documenten'

If you are eligible for a rental home, the housing association will check if you meet all the conditions. You might be asked to upload certain documents to demonstrate that you meet all the conditions. You can do that in this menu. For example, you can upload your most recent income statement from the tax authority and a recent payslip.

'Mijn berichten'

Here you can see the messages you have received from Thuis in Limburg and participating housing associations.

'Uitschrijven'

Are you no longer looking for a home, parking space or garage? Or do you want to unregister? Then you can do so via this menu.

Want to know more about these subjects? Then please go to the 'Info & Contact' menu at www.thuisinlimburg.nl.



Tips

Create a search profile with notifications:

If any of the available rental homes comply with your search profile, you will receive a notification (e-mail) at around 18:00 o'clock. A notification will only show homes that fit your personal details and search profile.

The three search models are:

Registration period: The residence seeker who has been registered the longest will have the best chance of being awarded the rental home.

First response: The residence seeker who responds first will have the best chance of being awarded the rental home. These rental homes will always be placed online at 19:00 o'clock.

Via a draw: All residence seekers have the same chance of being awarded the rental home. If it is no longer possible to respond to a listing, the system will rank all residence seekers randomly.

Make sure your details are correct: If you are eligible for a rental home, the housing association will always check whether your personal situation/financial situation fits the allocation requirements. It is important for you to change your details if something changes in your personal circumstances. If you fail to do so, the housing association may not be allowed to offer you the home.

Make sure you provide extra documents

in time: For example, download your income statement from the tax authority in time. To do this, log on to <https://mijn.belastingdienst.nl> with your DigiD details. Or call 0800-0543 and make sure you have your citizen service number handy. Add the form to your personal details under 'Mijn documenten/Verplichte inkomensformulier(en)'.

Fast track procedure. Do you have questions about applying for the fast track procedure (if you quickly need a home)? Then please contact one of the participating housing associations in your region. This also applies to Wmo (Social Support Act) relocation notices from the council. Exception: If you have questions about the fast track procedure in Maastricht, then please contact info@thuisinlimburg.nl.

Cross out your citizen service number (BSN) on the documents you upload via Mijn Documenten. Only show your passport or identity card when asked to do so by a housing association.

Extend your registration yearly: Each year, 5 weeks before the registration date, you will receive an e-mail to extend your registration. If you do not extend your registration, you will be unregistered automatically. If you accept a home via Thuis in Limburg, your registration will be cancelled and your spot on the waiting list will be deleted.